

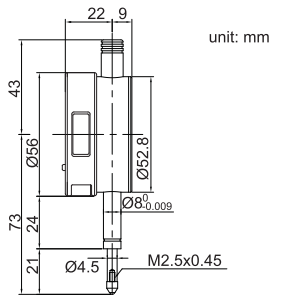
## SERIES 212

## DIGITAL INDICATOR

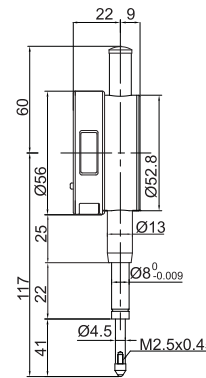
- ◆ Button: on/off, zero, inch/mm conversion, measuring direction set, data preset absolute/incremental measurement
- ◆ Data output (cable code: 200-03 or 200-04)
- ◆ Automatic power off
- ◆ Supplied with flat and lug back



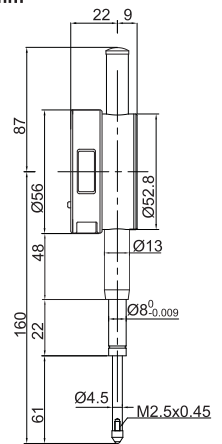
212-010-13



Range: 0-12.7mm



Range: 0-25.4mm



Range: 0-50.8mm

Code	Range	Resolution	Accuracy	Hysteresis
212-010-03	12.7mm/0.5"	0.001mm/0.00005"	5μm	2μm
212-025-03	25.4mm/1"	0.001mm/0.00005"	5μm	3μm
212-050-03	50.8mm/2"	0.001mm/0.00005"	6μm	3μm
212-010-13	12.7mm/0.5"	0.01mm/0.0005"	20μm	10μm
212-025-13	25.4mm/1"	0.01mm/0.0005"	20μm	10μm
212-050-13	50.8mm/2"	0.01mm/0.0005"	30μm	10μm

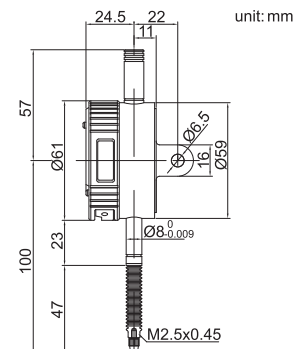
## SERIES 213

## WATERPROOF DIGITAL INDICATOR

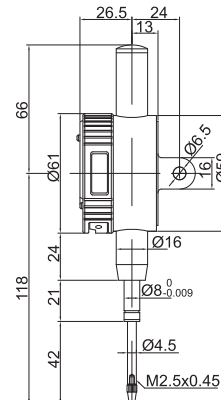
- ◆ Dust/waterproof
- ◆ Button: on/off, zero, inch/mm conversion, measuring direction set, data preset absolute/incremental measurement
- ◆ Automatic power off
- ◆ Data output (cable code: 200-01 or 200-02)
- ◆ Supplied with lug and flat back



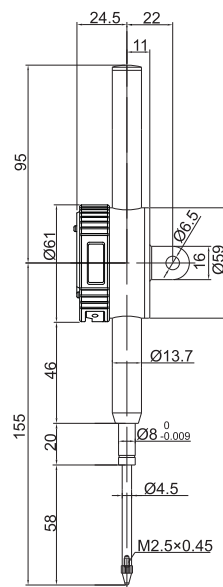
213-010-01



Range: 0-12.7mm



Range: 0-25.4mm



Range: 0-50.8mm

Code	Range	Resolution	Proof Level	Accuracy	Hysteresis
213-010-01	12.7mm/0.5"	0.001mm/0.00005"	IP65	5μm	2μm
213-025-01	25.4mm/1"	0.001mm/0.00005"	IP54	5μm	3μm
213-050-01	50.8mm/2"	0.001mm/0.00005"	IP54	6μm	3μm
213-010-11	12.7mm/0.5"	0.01mm/0.0005"	IP65	20μm	10μm
213-025-11	25.4mm/1"	0.01mm/0.0005"	IP54	20μm	10μm
213-050-11	50.8mm/2"	0.01mm/0.0005"	IP54	30μm	10μm