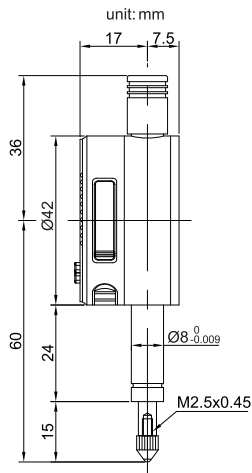


DIGITAL INDICATOR

SERIES 214



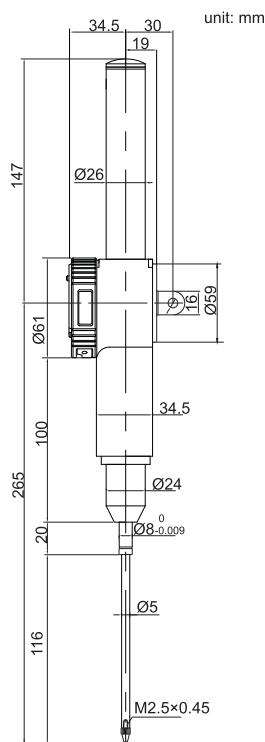
214-005-12

- ◆ Button: on/off, zero, inch/mm conversion, measuring direction set, data preset absolute/incremental measurement
- ◆ Automatic power off
- ◆ Data output (cable code: 200-01 or 200-02)
- ◆ Supplied with flat back

Code	Range	Resolution	Accuracy	Hysteresis
214-005-02	5mm/0.2"	0.001mm/0.00005"	9µm	3µm
214-005-12	5mm/0.2"	0.01mm/0.0005"	20µm	10µm

DIGITAL INDICATOR

SERIES 214



214-100-11

- ◆ Button: on/off, zero, inch/mm conversion, measuring direction set, data preset absolute/incremental measurement
- ◆ Automatic power off
- ◆ Data output (cable code: 200-01 or 200-02)
- ◆ Supplied with lug and flat back

Code	Range	Resolution	Accuracy	Hysteresis
214-100-01	100mm/4"	0.001mm/0.00005"	9µm	3µm
214-100-11	100mm/4"	0.01mm/0.0005"	30µm	10µm

