

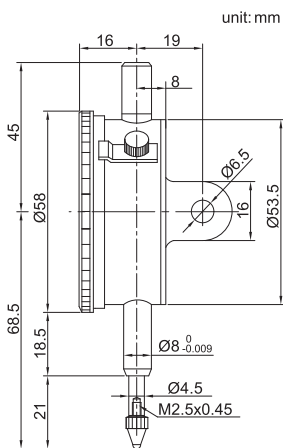
## DIAL INDICATOR

## SERIES 222



222-010-11

- ◆ Graduation: 0.01mm
- ◆ With limit hands
- ◆ Jeweled bearing
- ◆ Range per revolution: 1mm
- ◆ With lock screw



Code	Range	Back	Accuracy	Scale	Hysteresis
222-003-11	3mm	lug	14μm	0-100	3μm
222-005-11	5mm	lug	16μm	0-100	3μm
222-010-11	10mm	lug	20μm	0-100	3μm
222-003-12	3mm	flat	14μm	0-100	3μm
222-005-12	5mm	flat	16μm	0-100	3μm
222-010-12	10mm	flat	20μm	0-100	3μm

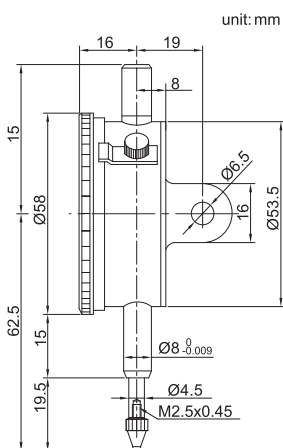
## DIAL INDICATOR

## SERIES 222



222-001-01

- ◆ Graduation: 0.001mm
- ◆ With limit hands
- ◆ Jeweled bearing
- ◆ Rang per revolution: 0.2mm
- ◆ With lock screw



Code	Range	Back	Scale	Accuracy	Hysteresis
222-001-01	1mm	lug	0-100-0	5μm	2μm
222-001-02	1mm	flat	0-100-0	5μm	2μm

