

more Power Features

new FEATURES

- Digital Time and/or Constant Energy Weld Modes Available
- Single-piece Rigid Cast Aluminum Machine Base and Column Hub
- Digital Amplitude Control
- Ultrasonic Horn/Stack Frequency Display
- Front Panel Pneumatic and Microprocessor Controls

new MODELS

WELD BY:

digital time

- **Model XPT 1200** (1200 watts)
- **Model XPT 2200** (2200 watts)

digital time and/or

constant energy

- **Model XPE 1200** (1200 watts)
- **Model XPE 2200** (2200 watts)

STANDARD

FEATURES INCLUDE:

- Automatic Frequency Tuning
- Weld, Hold, Delay and Afterburst Timers
- Back-Lit LCD Display
- Ultrasonics Load Meter Scale
- Upper and Lower Weld Limit Settings
- Soft-start Overload Protection Circuitry
- Load Regulation Circuitry
- Digital Wattage Display



SONICS[®]
SONICS & MATERIALS, INC.



Models XPT and XPE Integrated Welder For Ultrasonic Plastics Assembly



X-Press

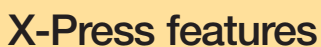
Leaders in the field of ultrasonic plastics welding equipment and technology since 1969, Sonics & Materials introduces its new 20 kHz X-Press integrated welder, an all-in-one super-rigid ultrasonic press that combines power, versatility and microprocessor control in one convenient unit.

The X-Press easily handles significantly larger part size and force requirements and delivers consistent reliability for every application. The built-in microprocessor with easy-access front-panel keypad provides streamlined smart-logic navigation through user-friendly welding mode controls and displays.

for more information: 1-800-745-1105

www.sonics.com





- specifications, additional features, and options

dimensional data:

Technical drawings of the 1000 Series Vertical Lathe Machine showing front, side, and detail views with dimensions in inches and millimeters.

Front View Dimensions:

- Overall Height: 42 (1066.8)
- Overall Width: 25 (635.0)
- Top Section Height: 5 1/4 (133.4) TYP
- Section Height: 10 (254.0) MAX
- Base Section Height: 4 1/4 (108.0)

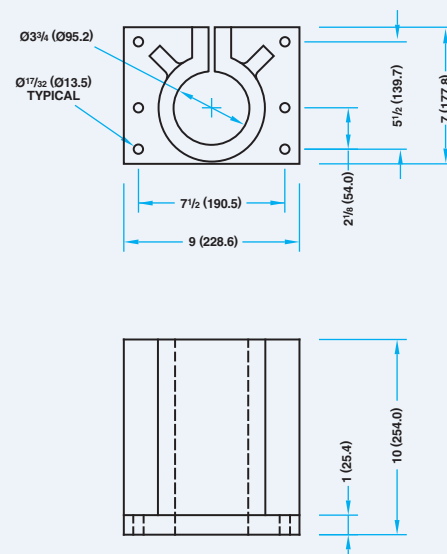
Side View Dimensions:

- Overall Height: 48 (1219.2) MAX
- Base Width: 14 (355.6)
- Top Section Width: 5 1/4 (146.1)

Detail View Dimensions:

- Overall Width: 14 3/4 (374.7)
- Overall Height: 13 1/2 (342.9)
- Section Height: 12 (304.8) TYPICAL
- Section Height: 7 (177.8) TYPICAL
- Section Width: 12 1/2 (317.5)
- Section Width: 3/8-16 TYPICAL
- Section Width: Ø3 3/4 (Ø95.2)

OPTIONAL STAND-ALONE HUB

**Sonics & Materials, Inc.**

Registered by UL to ISO 9001